

The reign of Queen Victoria, commonly referred to as the Victorian Era, saw a long period of prosperity for the British people.



The reign of Queen Victoria, commonly referred to as the Victorian Era, saw a long period of prosperity for the British people.

Overture – Victorian scenes, SCRIM AND TOWERS FRONT PROJECTION.



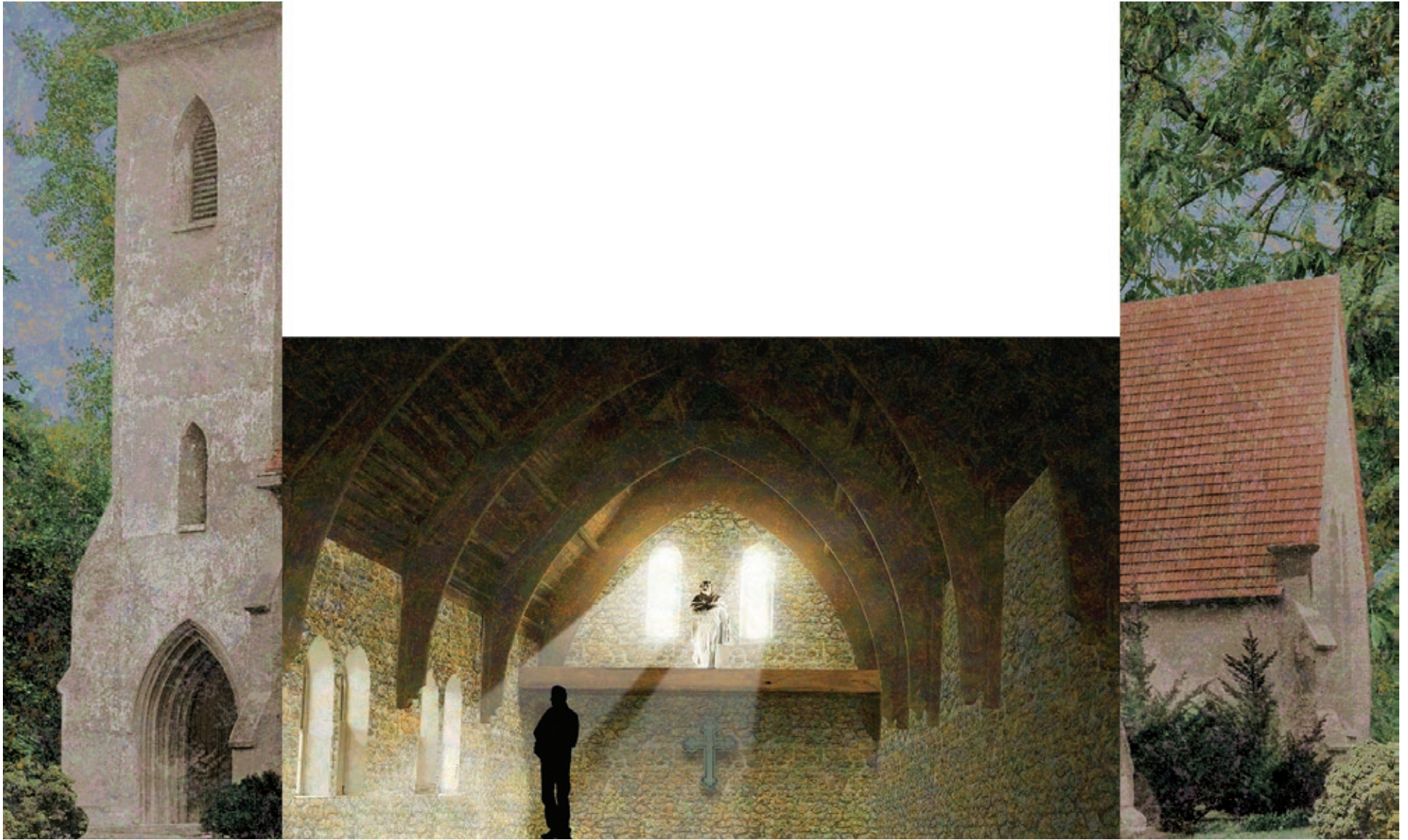
Overture – Victorian scenes, SCRIM AND TOWERS FRONT PROJECTION, LIVE TALENT LIT, SEEN BEHIND SCRIM.



Scrim rises, reveals talent on scaffolding. REAR PROJECTION. Towers FRONT PROJECTION.



Scene 1 – London East End, REAR PROJECTION. Towers FRONT PROJECTION.



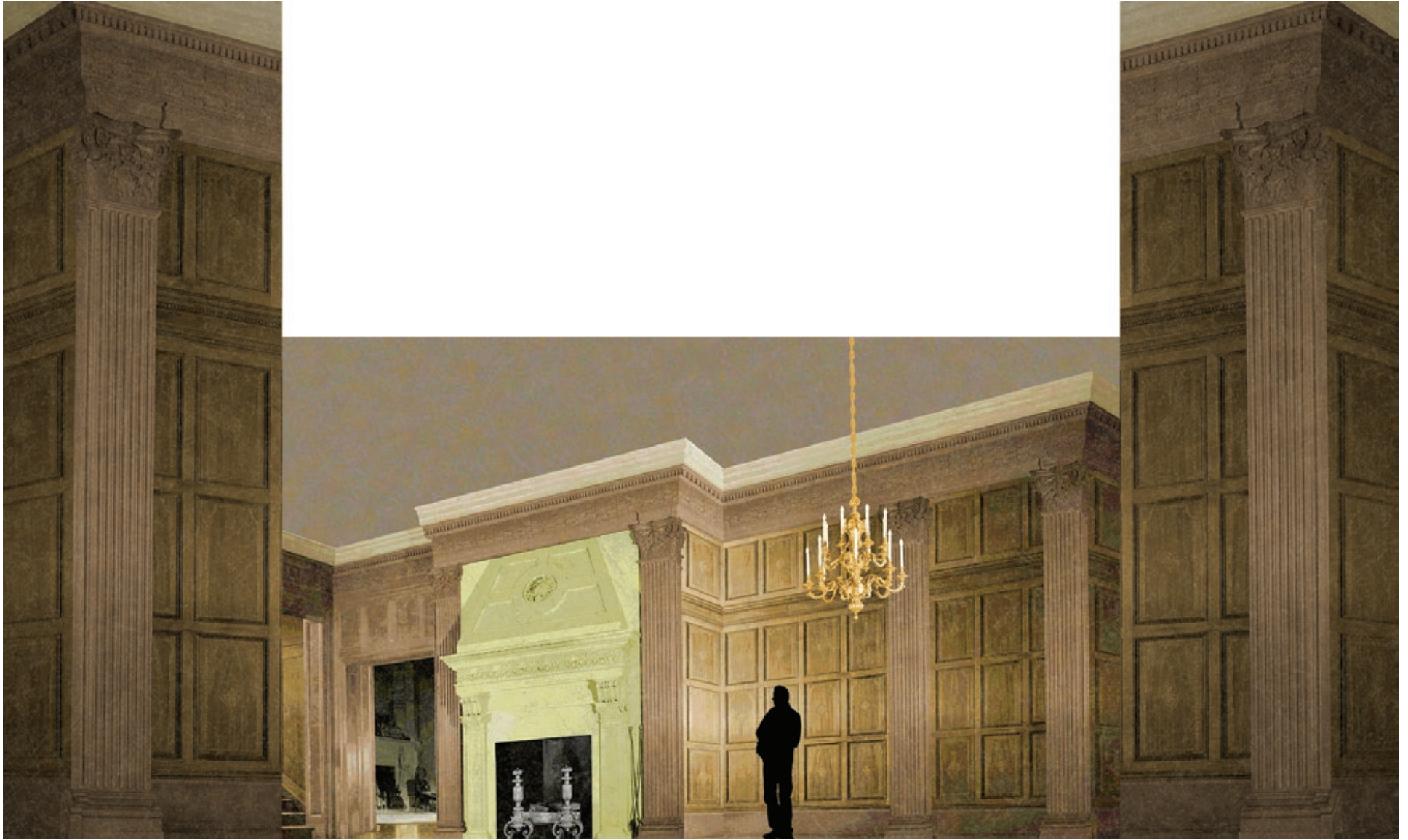
Scene 2 – Binfield House interior, REAR PROJECTION. Towers FRONT PROJECTION.



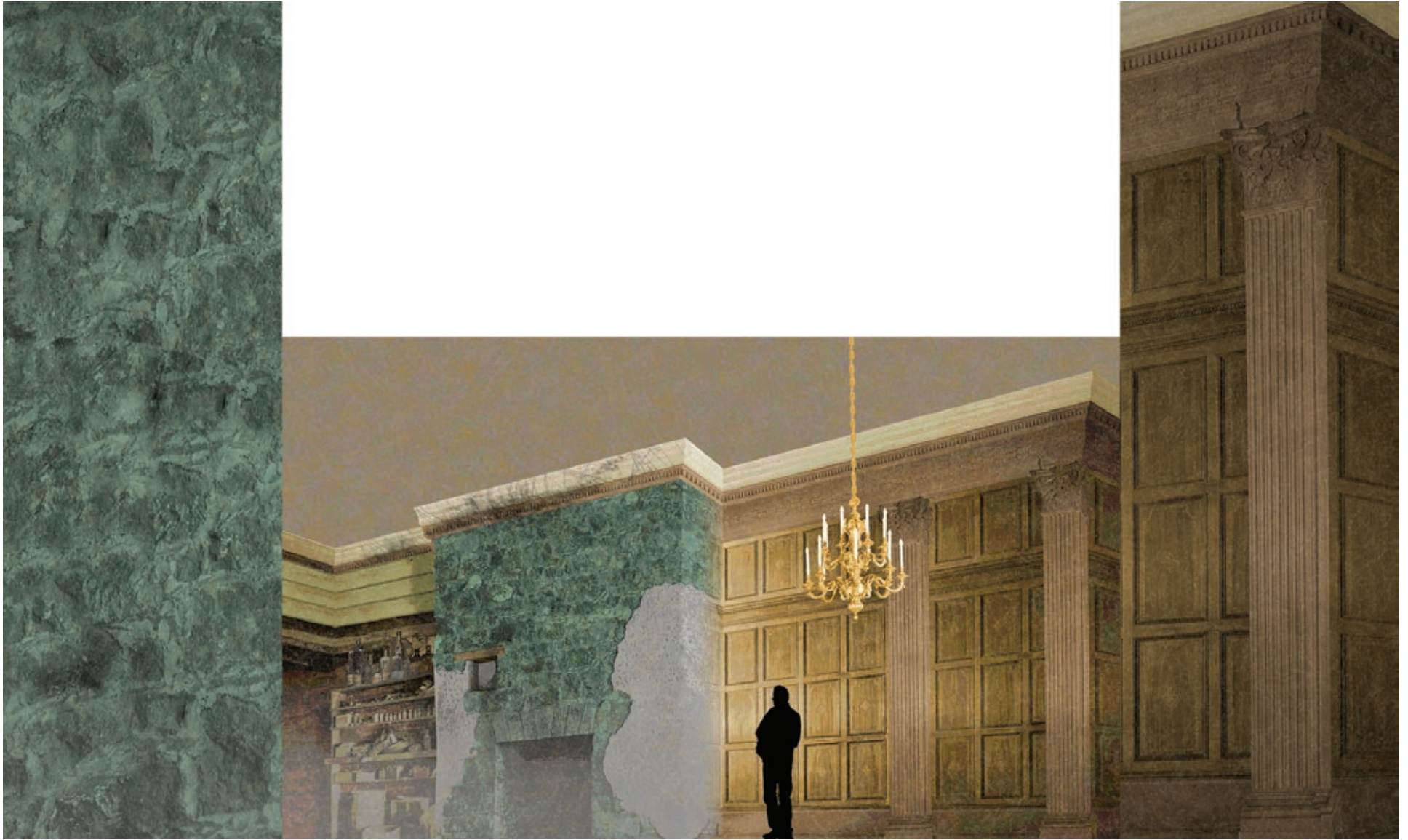
Scene 2.1 Binfield House exterior, SCRIM AND TOWERS FRONT PROJECTION. Art matches/aligns with towers of previous scene.



Scene 3a – London East End, Poor House, SCRIM AND TOWERS FRONT PROJECTION (garbage steam animates, panning across).



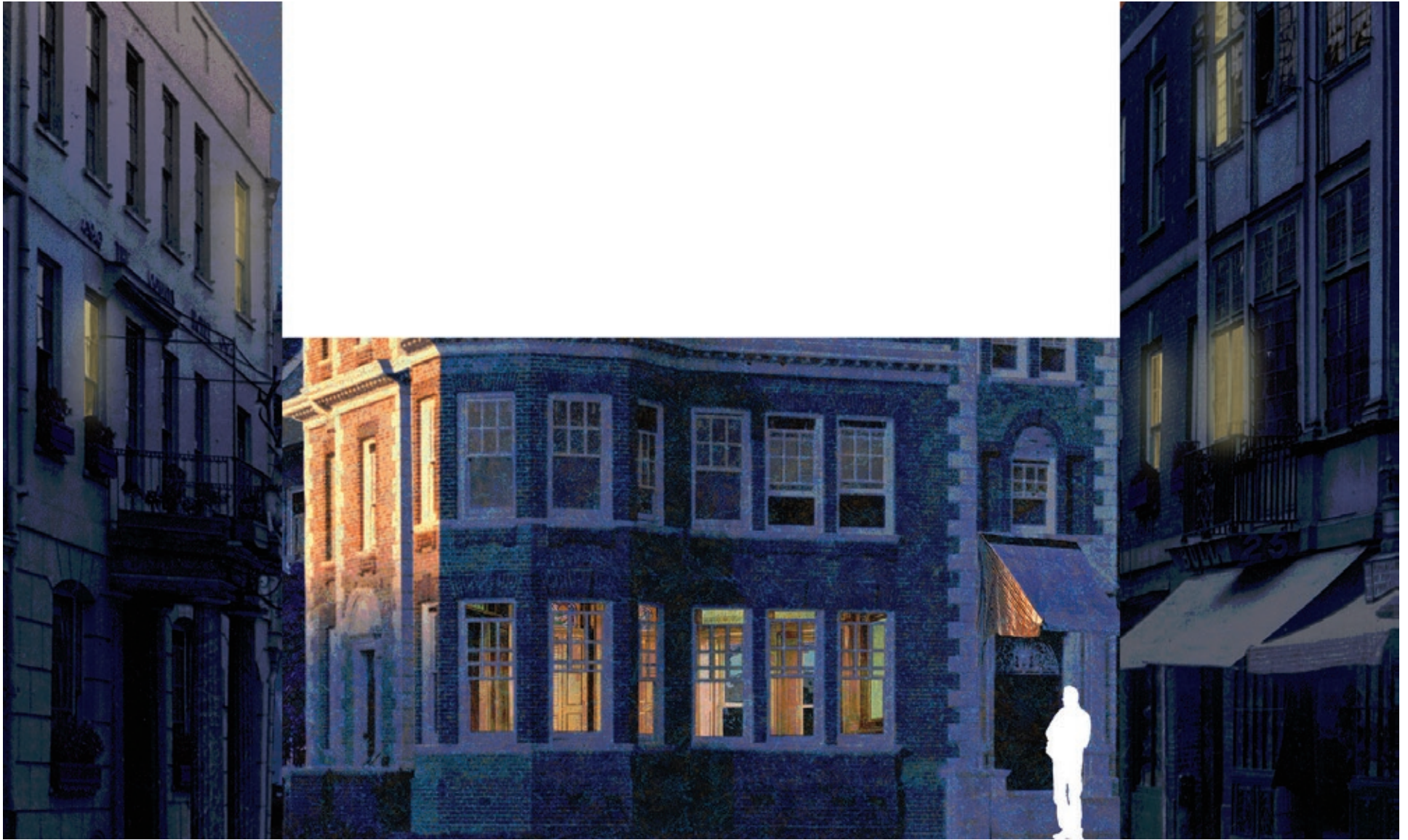
Scene 3b, pt 1 – Rabbit's house, REAR PROJECTION. Towers FRONT PROJECTION.



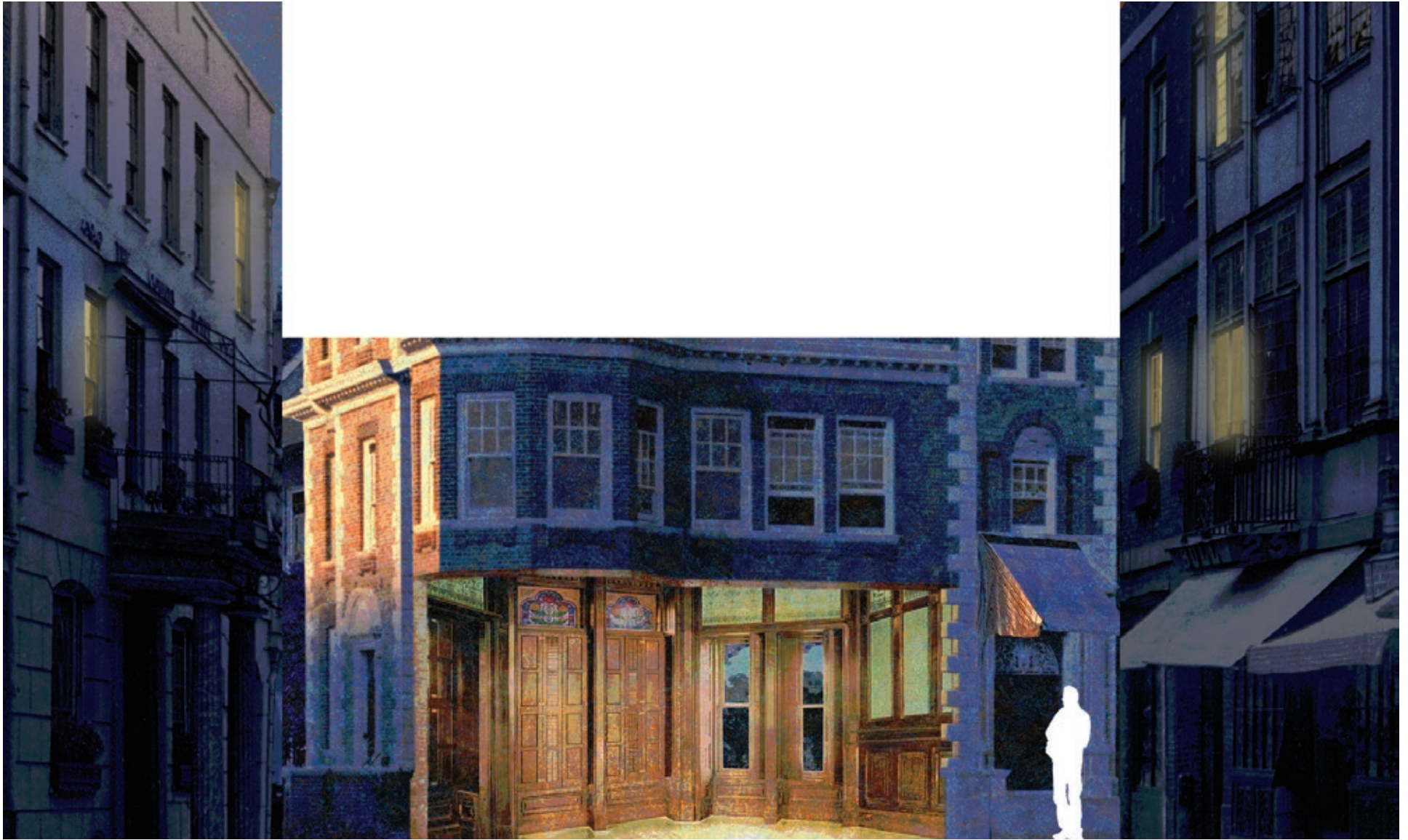
Scene 3b, pt 2 – Rabbit's house, SR scene changes to Groggseller's pub. REAR PROJECTION. Towers FRONT PROJECTION.



Scene 4a – London East End, SCRIM AND TOWERS FRONT PROJECTION.



Scene 4b, pt. 1 – Street outside Mumford home, showing scene AFTER panning down street, REAR PROJECTION. Towers FRONT PROJECTION.



Scene 4b, pt. 2 – Reveal interior of Mumford home, REAR PROJECTION.



Scene 5a – London East End, SCRIM AND TOWERS FRONT PROJECTION.



My dear Kate,

I must admit that since
I escorted you home
the other evening, I
have been a different
man. You have
captured my heart. I
was not looking to fall
in love, but I have.
You are everything I
have hoped and
prayed for. I feel

April, 1852

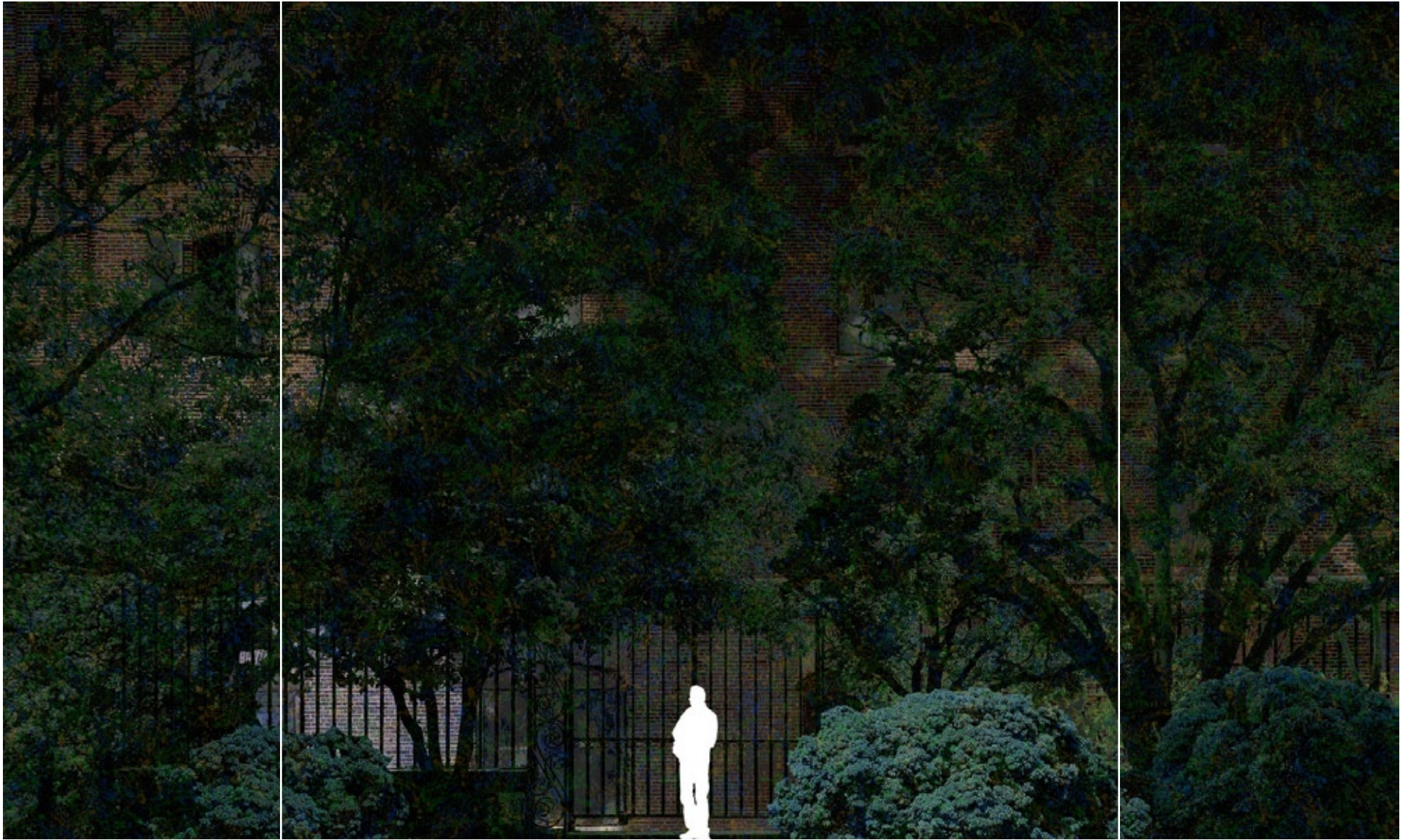
My dear Kate,
I must admit that since I escorted you home
the other evening, I have been a different
man. You have captured my heart. I was
not looking to fall in love, but I have.
You are everything I have hoped and
prayed for. I feel completely comfortable
in your presence, so alive, so complete.
Until I see you again, be assured that
I am forever, your dearest and most
sacred friend.

Will

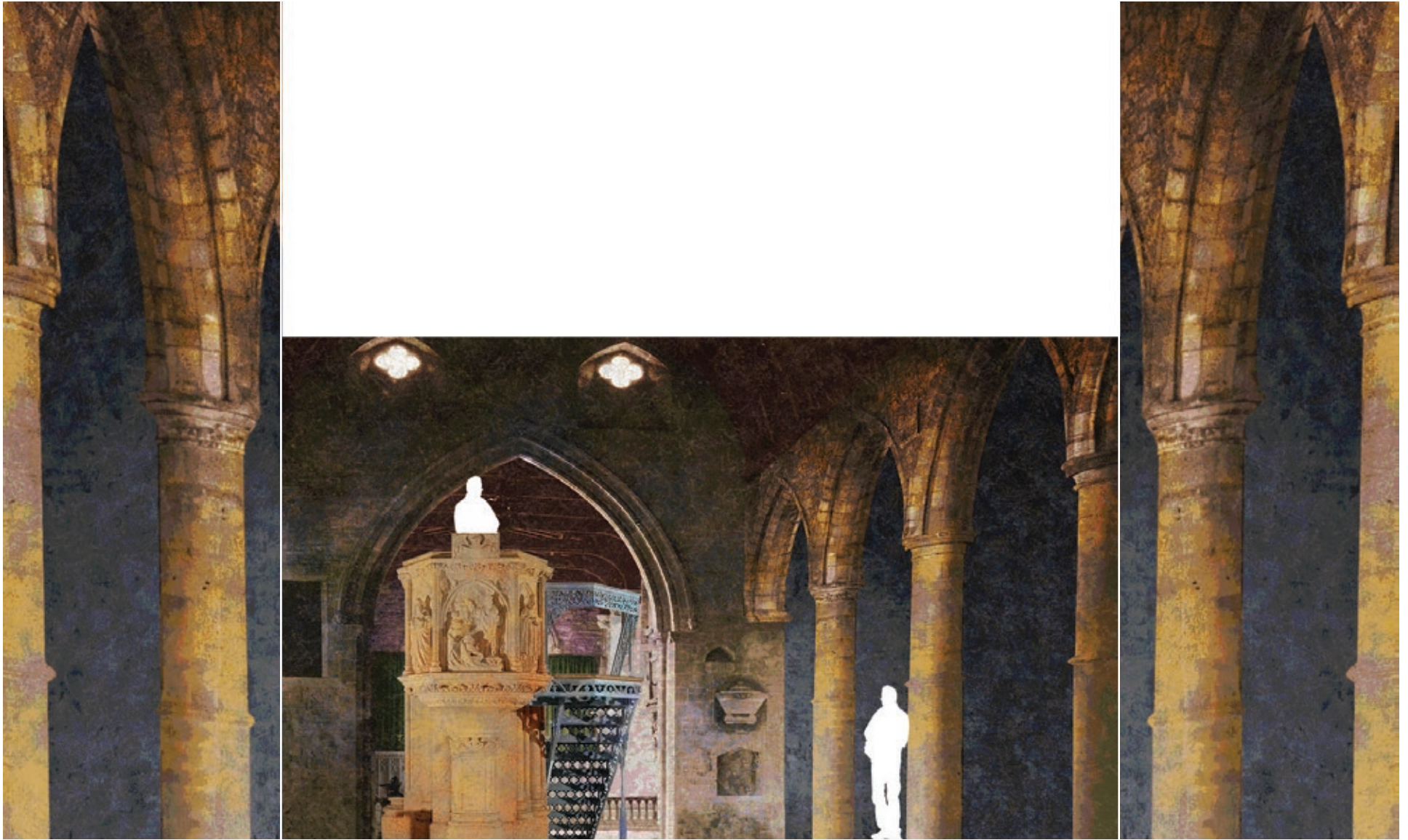
Scene 5b, pt. 1 – Letters by William and Catherine – LETTER & VELVET BKGD ON SCRIM, FRONT PROJECTION. TOWERS, FRONT PROJECTION. WRITTEN SCRIPT ON REAR SCREEN. First letter fades on, written script from that letter scrolls slowly on rear screen. Text of letter scrolls on left tower to match narration.



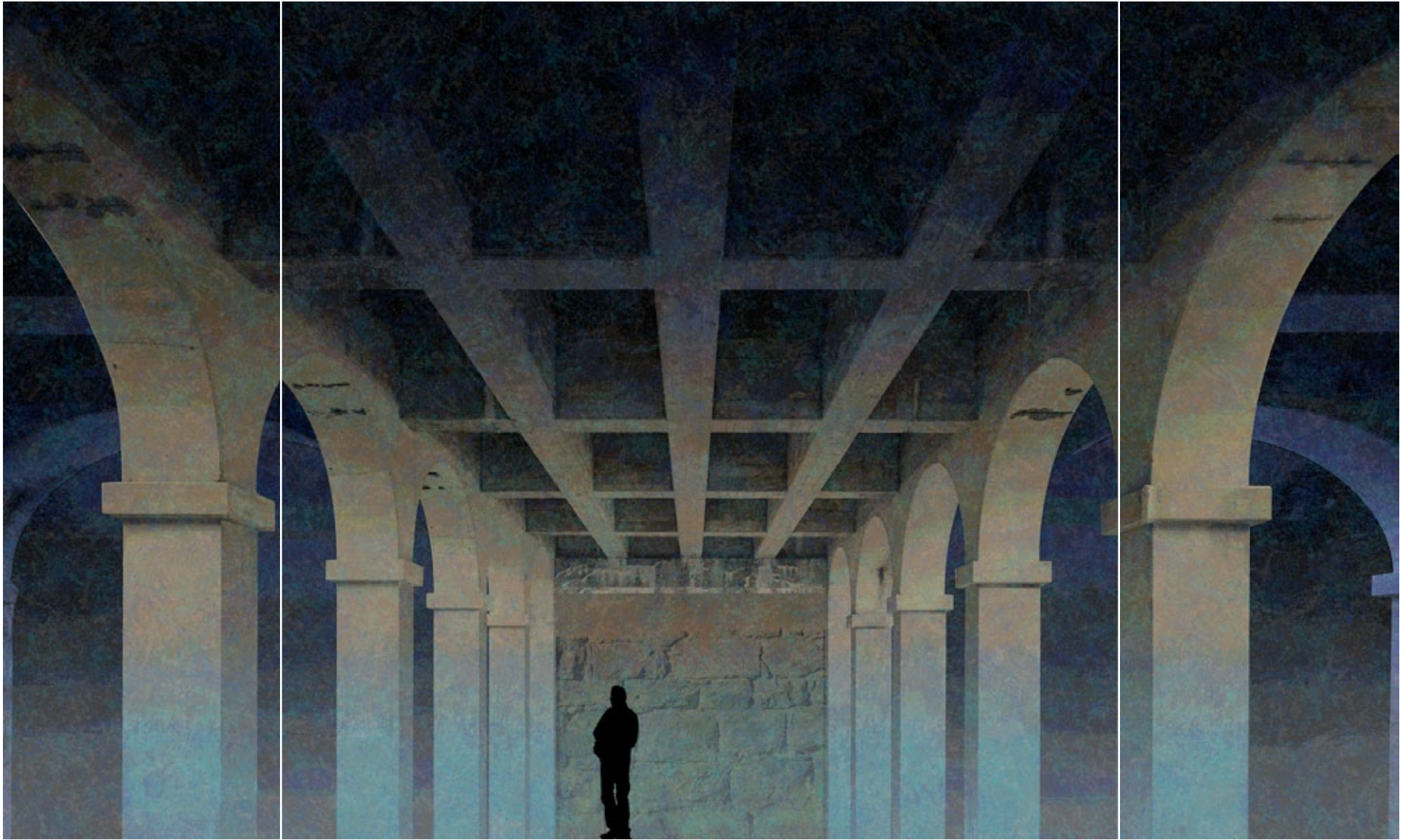
Scene 6 – New Connexion Methodist boardroom, SCRIM AND TOWERS FRONT PROJECTION, LIVE TALENT SEEN BEHIND SCRIM, ON SCAFFOLD.



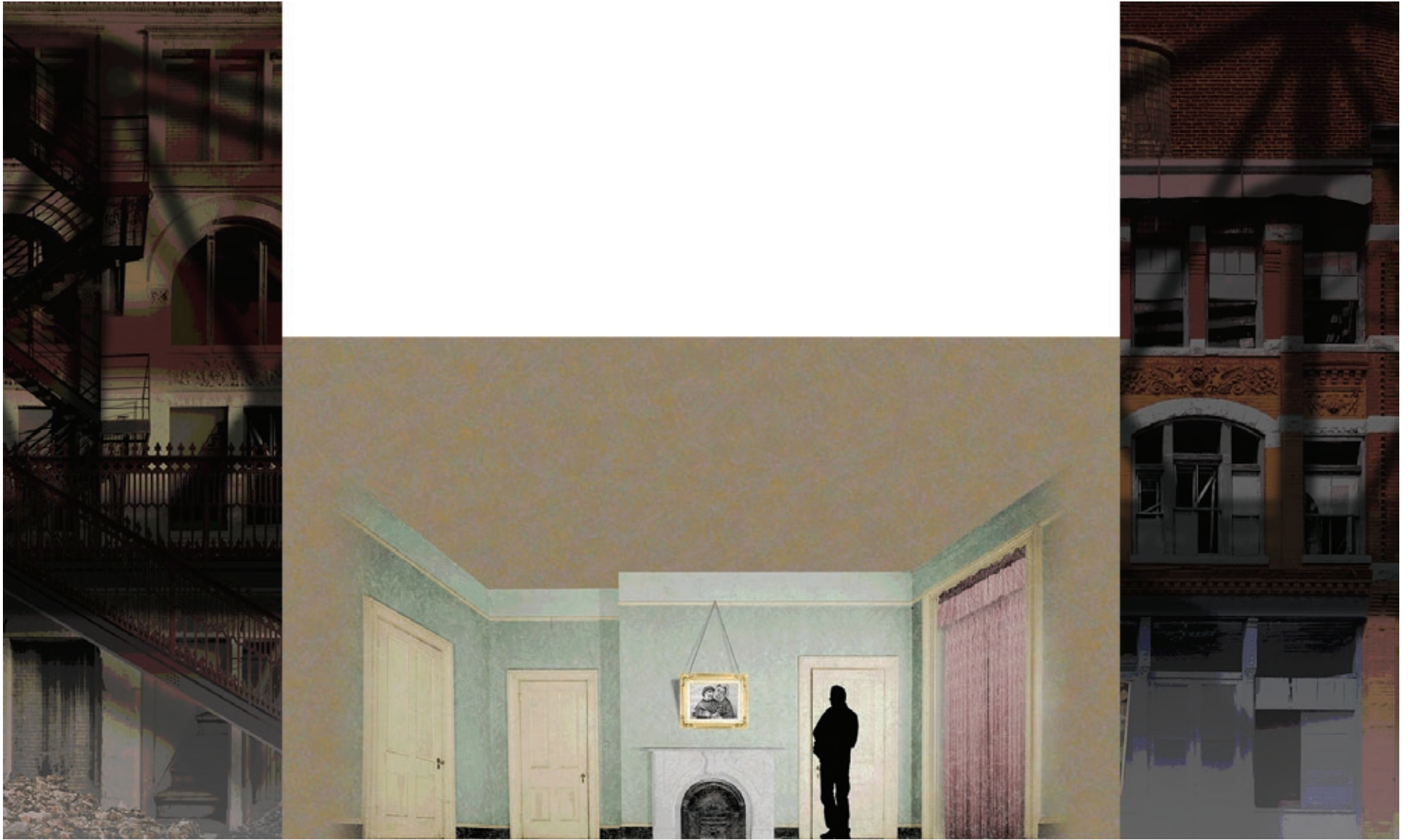
Scene 8a – London East End, trees and bushes, SCRIM AND TOWERS FRONT PROJECTION.



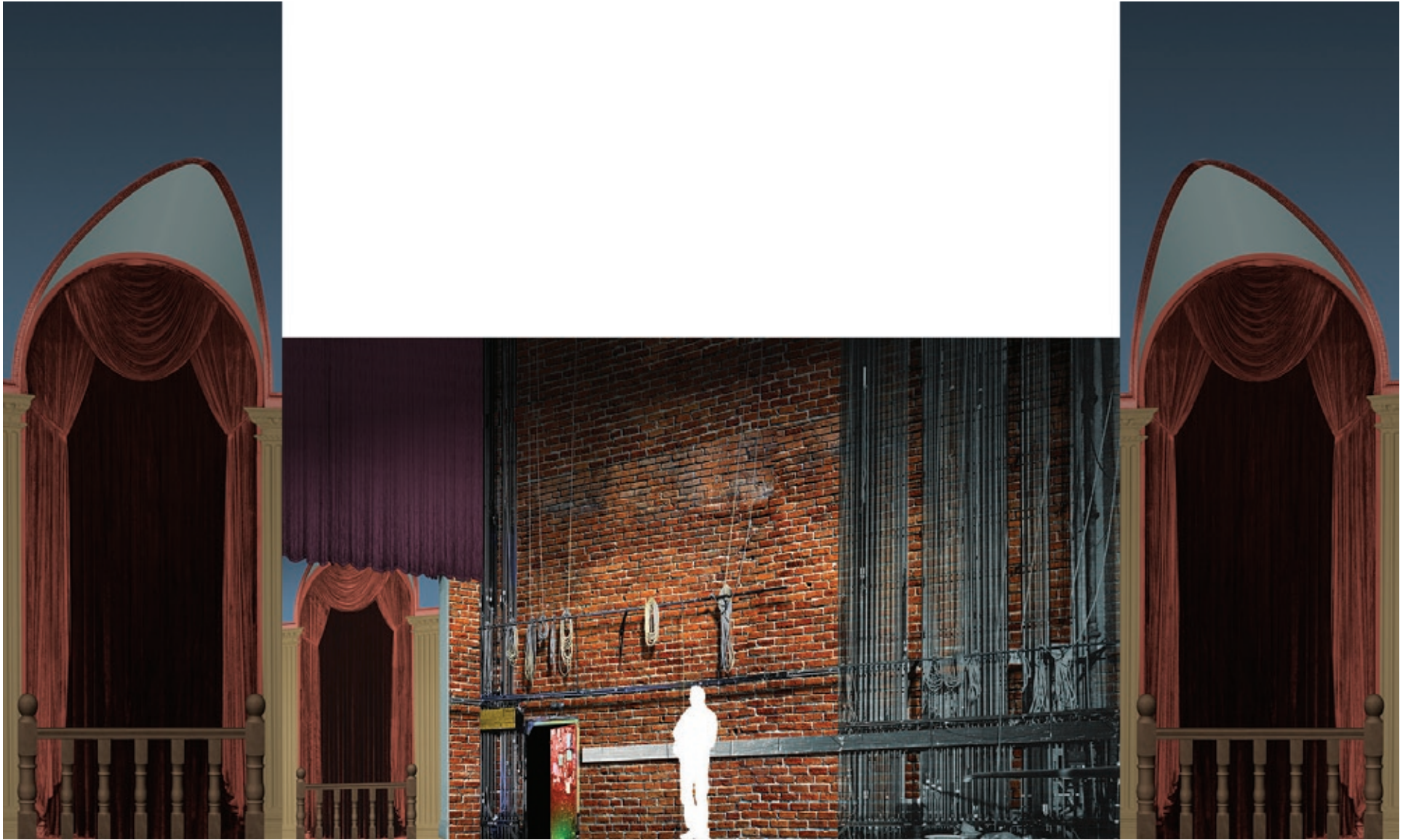
Scene 8b, pt 1 – A church in Sunderland, England, PULPIT IS SCRIM FRONT PROJECTION AS ARE THE TOWERS, BACKGROUND IS REAR PROJECTION, TALENT ON SCAFFOLD APPEARS TO SPEAK FROM PULPIT.



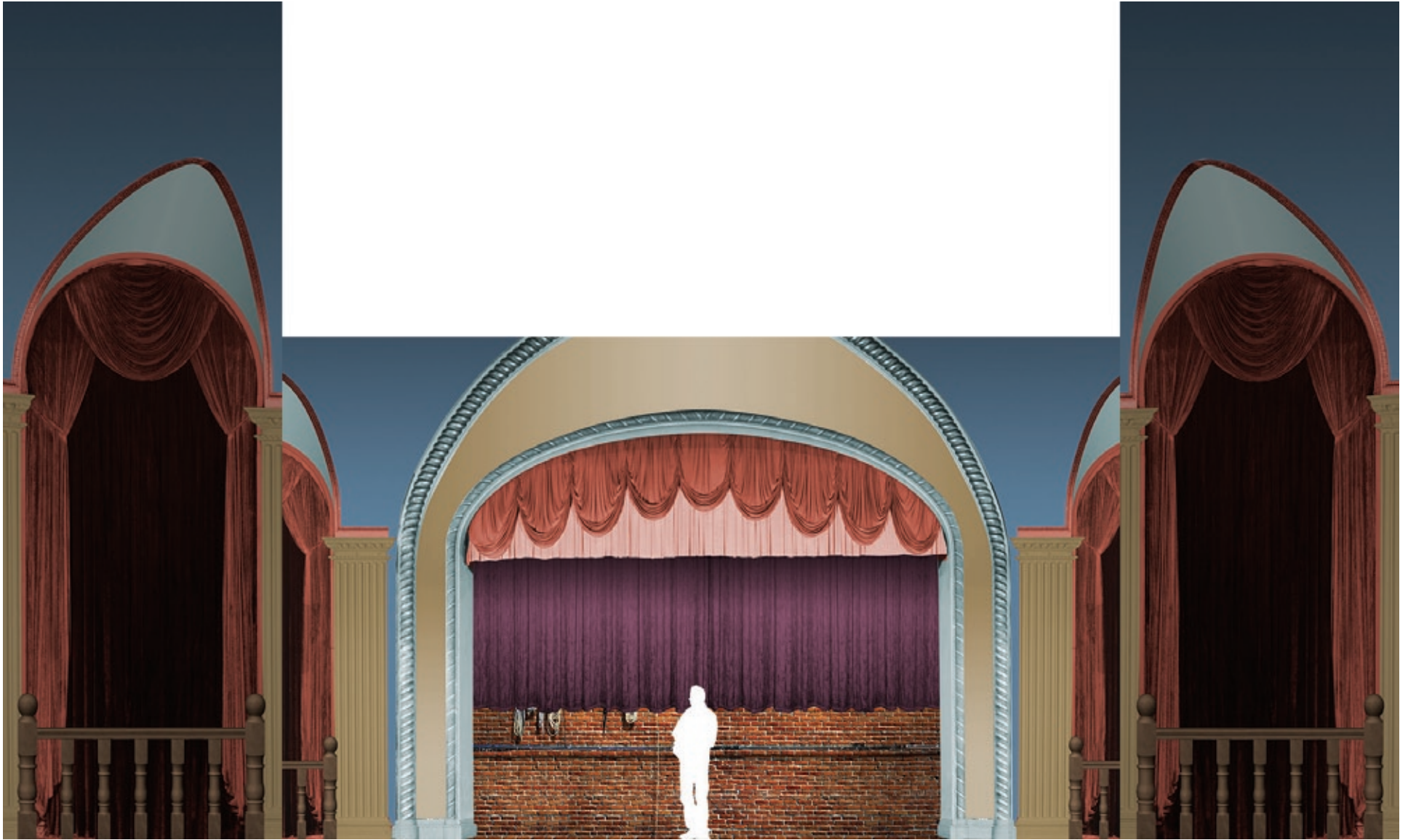
Scene 11 – London East End, SCRIM AND TOWERS FRONT PROJECTON.



Scene 12 – William and Catherine's home interior, REAR PROJECTION. Towers FRONT PROJECTION.



Scene 14 pt. 1 – Vaudeville dance hall, backstage, REAR PROJECTION. Towers FRONT PROJECTION.



Scene 14 pt. 2 – Vaudeville dance hall, view swings to see house, then makes 180 degree turn to see proscenium. REAR PROJECTION. Towers FRONT PROJECTION.



Scene 15 – Home office of William Booth, REAR PROJECTION. Towers FRONT PROJECTION.